
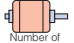
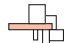


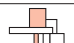
YCII-70S/D


■ Features


-  **30~80tf**

-  **3/5-axis**

-  **Single support type**

-  **Reduced overall height type**

-  **On robot body**

-  **E-touch compact-YC**

All-Axis Servo Driven Take-Out Robot for Energy-Smart Manufacturers

Compared to older models, YC series robots benefit from much lighter components and structures by incorporating design optimization technology. This weight reduction results in significantly better energy efficiency and longevity. Design optimization also targeted factors like natural oscillation and damping characteristics to greatly reduce arm vibration. The YC II -70 is sized for 30~80 tf molding machines.

E-touch compact-YC^{PAT.}



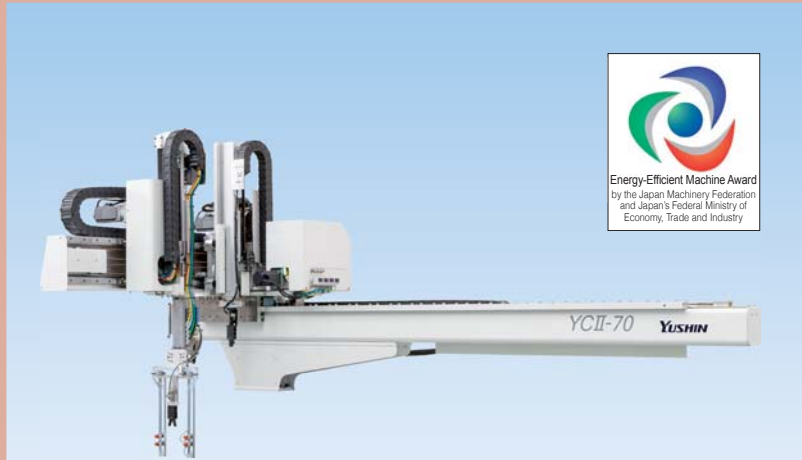
- ECO Vacuum
 - ECO Monitor
 - Predictive Maintenance^{*}
- * Continuously monitors robot during operation and alerts operator with a message if potential trouble symptoms are detected. This function elevates maintenance from preventative to predictive.
- Standard equipment

■ Standard Specifications

Power source	Driving method	Control method	Air pressure	Wrist flip angle
Single phase AC200V/220V (50/60Hz)	Digital servo motor 3/5-axis	Micro computer control	0.49MPa Maximum allowable air pressure (factory) 0.7MPa	90 deg.

Model	Power consumption	Traverse stroke (mm)	Kick stroke (mm)		Vertical stroke (mm)		Air consumption (NL/cycle)	Payload (kg)	Clamping force (tf)
			Main arm	Sub arm	Main arm	Sub arm			
YC II -70S	S type 1.4kVA AC200V 7.0A	1100 [1400] [1700]	500	—	600 [700]	—	3.2 (ECO Vacuum OFF) 1.0 (ECO Vacuum ON)	3	30 ~ 80
YC II -70D	D type 1.9kVA AC200V 9.5A		442	442		650 [750]			

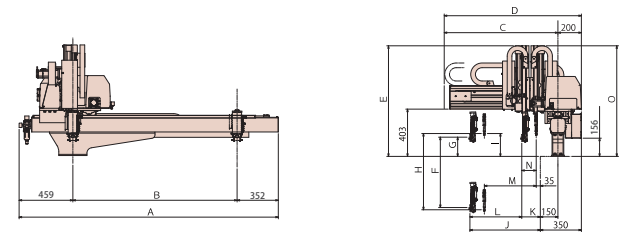
S type: Robot is equipped with product take-out arm only. D type: Robot is equipped with product take-out arm and runner take-out arm.
 [] : Modified traverse stroke
 Payload includes the end-of-arm tool.
 Higher payloads possible, depending on take-out settings and speeds.



The CE specification is a special order. Please contact us.

PAT.

■ Dimensions (mm)



Model	A	B	C	D	E	F	G	H	I	J	K	L	M	N	O
YC II -70S	1910 (2210)	1100 (1700)	969	1169	943 (999)	600 (700)	164	—	—	600	100	500	—	—	—
YC II -70D								650 (750)	195		158	442	442	123	943 (999)

[] : Modified traverse stroke
 < > : Modified vertical stroke